

Check restrictive valve

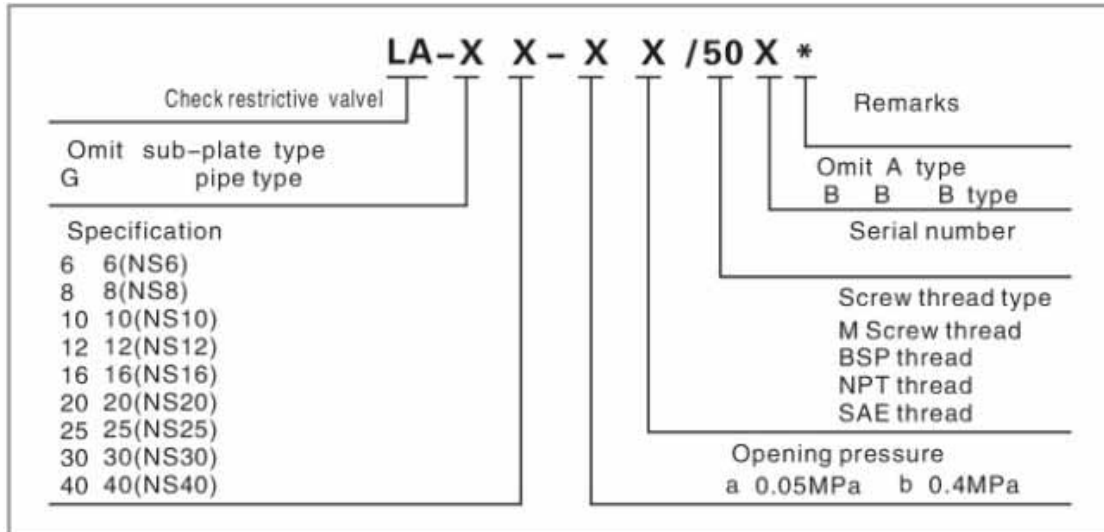


1-way restrictive valve is consisted of needle valve and 1-way valve in parallel. It is used to adjust the flow in one way,

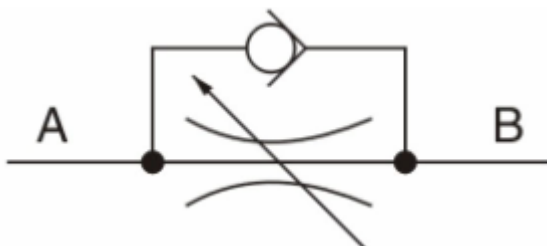
Technical specification

Model	6	8	10	12	16	20	25	30	40
Specification									
Maximum pressure(MPa)	31.5								
Maximum flow(l/min)	14	40	60	85	175	200	300	400	600
Hydraulic fluid	Mineral oil, phosphate-ester								
Fluid temp.()	-20 ~ 70								
Viscosity(mm ² /s)	2.8 ~ 380								
Opening pressure	a : 0.05 b:0.4								
Weight (kg)	0.45	0.44	0.47	1.02	0.97	2.22	4.35	8.55	12.32

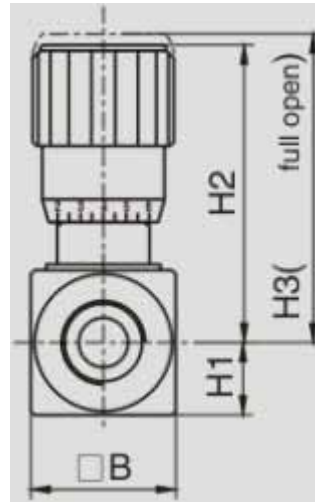
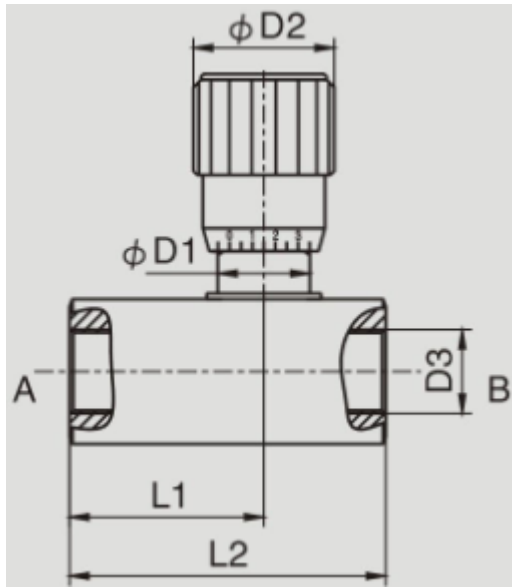
Model instruction



Code symbol



External dimensions



Model	B	D1	D2	D3			H1	H2	H3	L1	L2
G6	28	19.3	30	M10X1	G1/8"	NPT1/8"	14	59.3	64.8	36	58
G8	28	19.3	30	M14X1.5	G1/4"	NPT1/4"	14	61.3	67.9	39	64
G10	28	19.3	30	M18X1.5	G3/8"	NPT3/8"	14	61.5	67.5	43	70
G12	38	24.2	37	M22X1.5	G1/2"	NPT1/2"	19	78.1	86.5	52	83
G16	38	24.2	37	M27X2	G3/4"	NPT3/4"	19	78.3	86.5	55.5	89
G20	48	35	48	M33X2	G1"	NPT1"	24	102.3	114.4	70.8	117
G25	60	50	48	M42X2	G1 1/4"	NPT1"	30	134.68	148.1	97	154
G30	70	70	80	M48X2	G1 1/2"	NPT1 1/4"	35	161.5	181.5	111	172
G40	90	71	80	M60X2	G2"	NPT2 1/2"	45	171.5	191.5	129	190